

Maintenance Instructions ClimaRad Sensa Vertical 2015

Maintenance frequency for filters

When should you replace the filters?

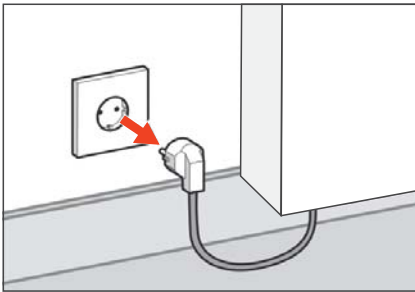
- With normal use, every 2 years or earlier if the message 'Filter vervuild' appears on the display (for example in homes and offices).
- In the case of intensive use, after 1 year or earlier if the message 'Filter vervuild' appears on the display (e.g. for care homes and schools).

Ordering filters

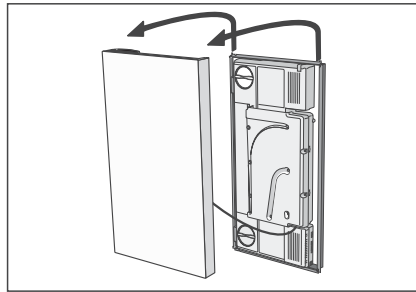
Order new filters at

www.climarad.nl/filters

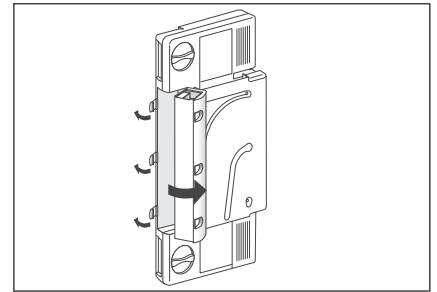
Replacing air supply filters



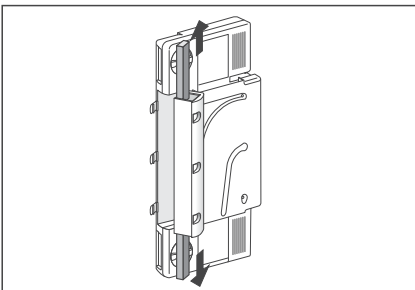
1. Switch off the device first by removing the plug from the socket.



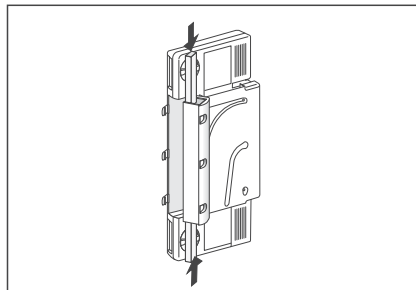
2. Remove the cover of the Sensa by lifting it upwards.



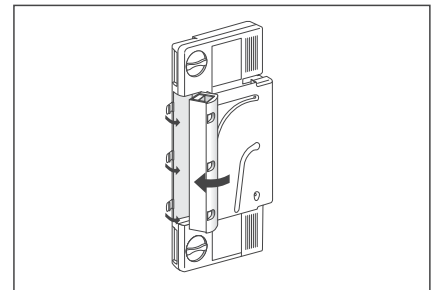
3. Open the three clips at the left-hand side of the unit and tilt the filter housing forwards.



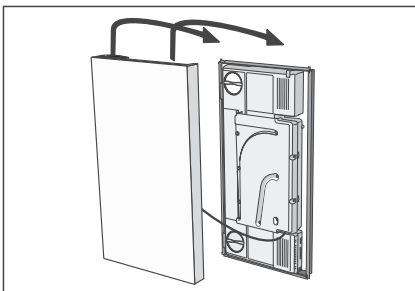
4. Push the two dirty air supply filters through the top and the bottom out of the filter housing.



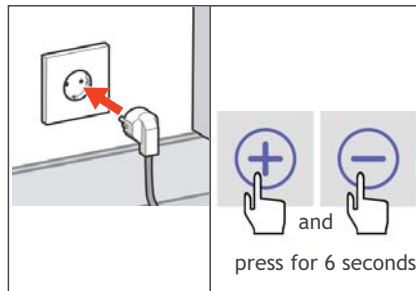
5. Push the new filters through the top and the bottom fully into the filter housing.



6. Tilt the filter housing back and secure with the three clips.



7. Put the cover back on.

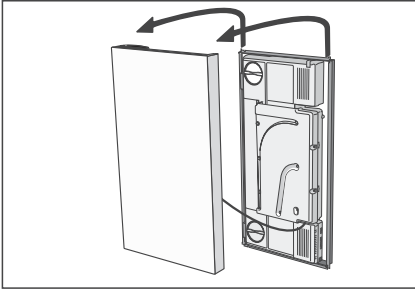


8. Push the plug back into the socket and reset the filter hour counter by simultaneously pressing on the + and - on the display for 6 seconds. The message 'Filter vervuild' will disappear.

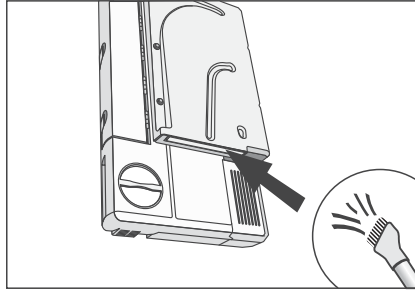
Important: Reset the filter hour counter only if you have replaced the filters.

Caution: Make sure the filters do not protrude from the filter housing or that tools are trapped between the filter housing and the radiator housing. This can damage the filter housing and cause air leaks along the edges.

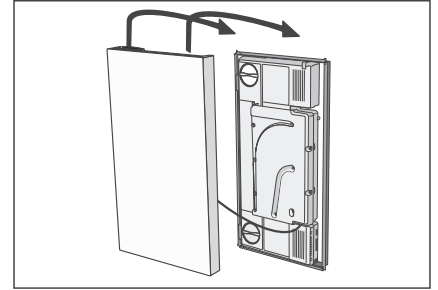
Cleaning the air outlet filters



1. Remove the cover of the Sensa by lifting it upwards.

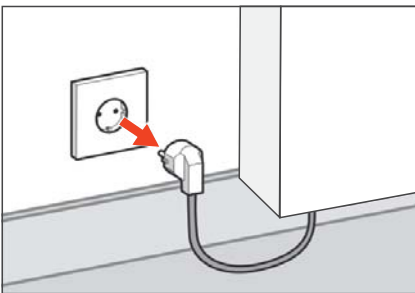


2. Vacuum the tray when dirty. You do not need to remove the air outlet filter.

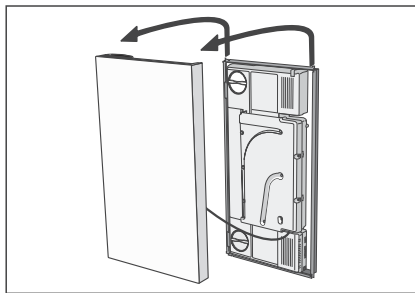


3. Put the cover back on.

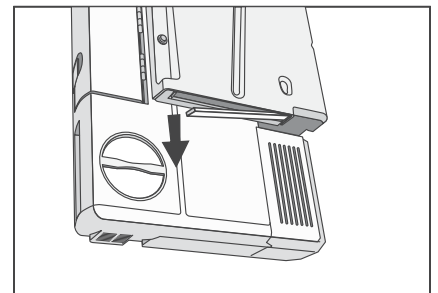
Replacing the air outlet filters



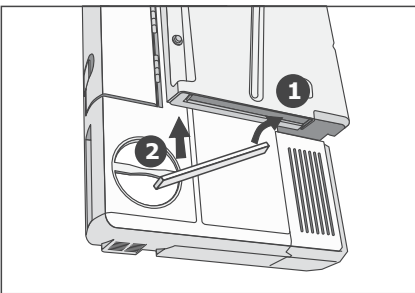
1. Switch off the device first by removing the plug from the socket.



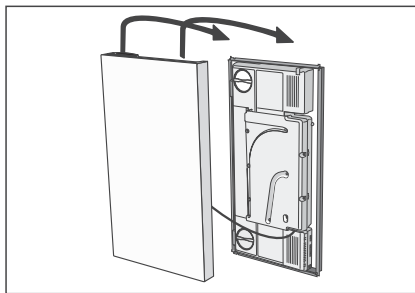
2. Remove the cover of the Sensa by lifting it upwards.



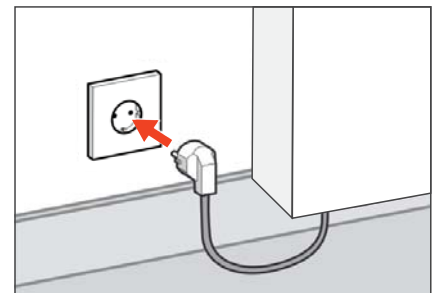
3. With a finger pull on the filter at the left-hand side of the opening and remove it.



4. Insert first the right-hand side of the new filter in the outlet opening. Then push the left-hand side of the filter in the opening.

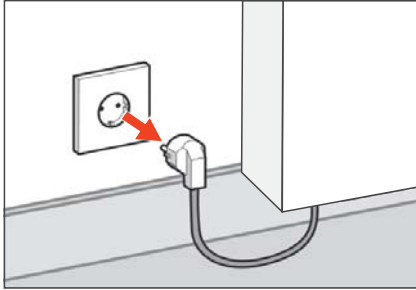


5. Put the cover back on.

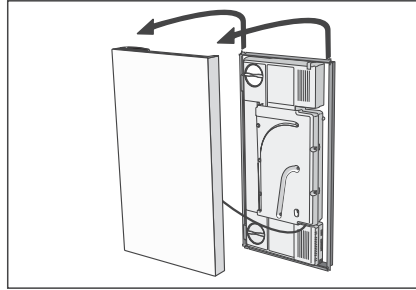


6. Push the plug back into the socket.

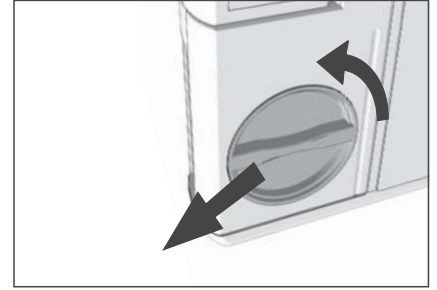
Cleaning the air ducts



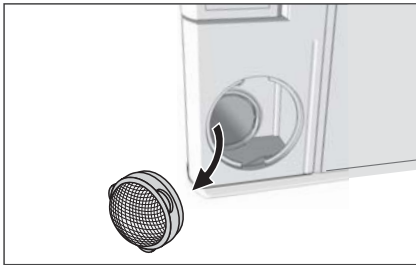
1. Switch off the device first by removing the plug from the socket.



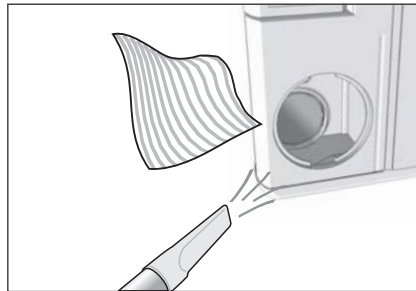
2. Remove the cover of the Sensa by lifting it upwards.



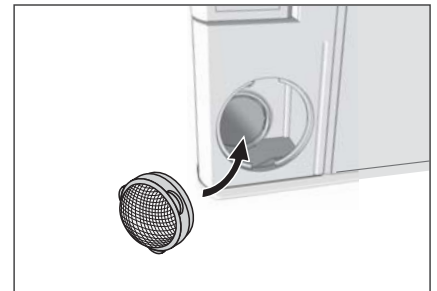
3. Remove the two caps by turning them to the left and removing them.



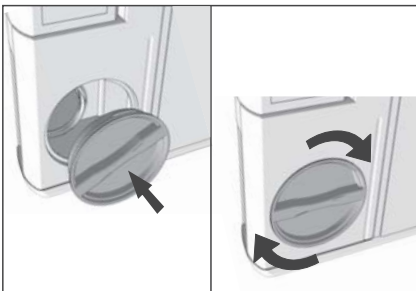
4. Grasp the round caps at the three tabs and remove both.



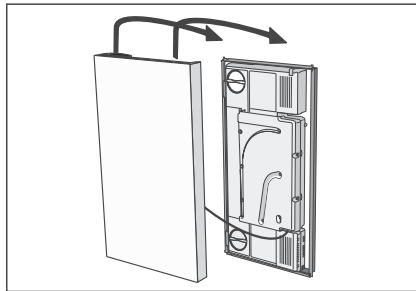
5. Remove any dirt from both channels with a vacuum cleaner or a soft cloth (do not use water).



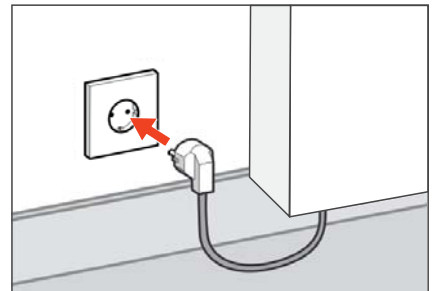
6. Insert the round caps..



7. Install both caps and tighten them well for a correct operation.



8. Put the cover back on.



9. Push the plug back into the socket.